



MPHS COMMUNITY TRUST
ANNUAL REPORT
2021/2022

He Karakia Tīmatanga me te Whakakapi Kaupapa

Kia tau ngā manaakitanga a te mea ngaro
ki runga ki tēnā, ki tēnā o tātou
Kia mahea te hua mākihikihi
kia toi te kupu, toi te mana, toi te aroha, toi te Reo Māori
kia tūturu, ka whakamaua kia tīna! Tīna!
Hui e, Tāiki e!

Let the strength and life force of our ancestors
Be with each and every one of us
Freeing our path from obstruction
So that our words, spiritual power, love, and language are upheld;
Permanently fixed, established and understood!
Forward together!

PEOPLE, PRIDE, PLACE

Kaitiakitanga (**Place**) is about nurturing and respecting our land. Our role as people (**People**) and to our whenua is to ensure its sustainability for future generations (**Pride**).

Our values – **Compassion, Contribution and Connection**, are woven throughout the three Pou and we continue to aim high to fulfil our values and commitments.

Recently, we have developed a Māori lens framework which is encompassed in the following:

Manaaki whenua, Manaaki tangata, Haere whakamua
Care for the land, care for the people, go forward

The expression 'Manaaki whenua, manaaki tangata, haere whakamua' connects people to the environment. This connection is expressed through kaitiakitanga – guardianship and protection.

Care for the land is about a place of nurture and respect, where connection and belonging are physical and spiritual, and the belief system that humans and nature are not separate but related as one.

Manaaki tangata is about working together to achieve aspirations for wellness within ourselves and the environment we live in. Changing

peoples' relationships with their environments will change the wellbeing of the people.

'Haere whakamua – go forward' is about our aspirations to achieve zero waste business that will create sustainable futures for many generations. This will contribute to living a vibrant and healthy life.

This framework will guide us in delivering the outcomes of the MPHS Community Trust:

MPHS Community Trust Key Outcomes:

- Create opportunities for our local community to engage in quality programmes and projects that improve their connection, well-being and sense of belonging.
- Invest in members of our community to challenge them to discover their dreams, inspire learning and support them to live the lives they value.
- Provide venues, resources and community space to host activities that meet the needs of the community.
- Successfully manage social enterprises that make positive contributions to the local community and support us to achieve our outcomes.

CONTENTS

People, Pride, Place 1

Reports

- MPHS Community Trust Report 2-3

Community Programmes

- Skateboarding Lessons ... 4
- Kids Club 5
- Easter People, Pride, Place Event 6
- Celebrating Matariki 7
- S.U.N – Shape Up Neighbourhood 7
- Haere rā Hippy 8-9

Youth Services

- Breakaway 10
- Youth Studio 11
- A Glance at Our Work .. 12-13
- Thank You Supporters 13
- Hubwest 14

Profile Deborah Raroa ... 15

Tipping Point 16-17

Waiōrea Community Recycling Centre 18

Profile Darryl Jellyman 19

Project Twin Streams 20

Profile Esteban Hevia 21

Financial Overview 22-23

Profile Kimberley Rees 24

MPHS COMMUNITY TRUST REPORT



WILL WARD
Chair



KATHRYN LAWLOR
Chief Executive

Tēnā koutou

It gives us great pleasure to present our joint Chair and Chief Executive report.

The past year has demonstrated the need now more than ever to work together to create opportunities to care for people, whānau, community and the environment. At our heart MPHS Community Trust is a community development organisation being responsive to the existing and developing needs of the community, working collaboratively to enable our community to connect and flourish. Understanding the importance of whānau and fostering a sense of connection to your community creates a positive impact on hauora/wellbeing.

Staying connected throughout the various lock downs and COVID restrictions was a focus for our team and as soon as possible Hubwest and our programmes were up and running and enjoying increased participation from the community.

Our approach through the programmes we deliver is on enabling a sense of connection

and community through activation. We are passionate about offering a diverse range of programmes, events and collaborations with other community partners. The results of this approach continues to receive wonderful feedback from the community who we strive to co-design new activations and grow our programmes alongside.

This year we saw the end of one of our long-term programmes HIPPY due to funding changes within the Ministry of Education. We can be proud of the 12 years this programme served the community and engaged over 600 tamariki in this successful evidence based early learning programme.

A highlight was our community response that ensured we maintained our contract to continue to offer our famous rangatahi holiday programme. This programme was in jeopardy due to changes within Oranga Tamariki contracts. We made a submission including overwhelming community support about the value of this programme, including direct rangatahi feedback and their voice about the need for this essential

programme. We were successful in keeping our contract going.

We continue to be a key participant in the West Auckland Together collaboration and are proud of the progress and collective vision this group continues to make to ensure a thriving community.

We created a new role – Kaitakawaenga (Maori Advisor) to connect with Māori in our community, engage, guide, provide support to enable community led initiatives. This role will also support our team to develop mātauranga Māori and bring about increased knowledge and understanding to further service our community.

Heartfelt thanks go to the MPHS and Tipping Point teams, you have been outstanding in continuing to give your best through times of change, adapting to new systems and ways of working in the COVID environment, supporting each other and making it all possible.

MPHS is very blessed to have a highly skilled and committed board that has provided sound governance expertise and guidance. Our work in community development would not be possible without our supporters, friends and benefactors and we take this opportunity to acknowledge and thank them all for their continued

confidence and support.

Alongside our community the success this year of MPHS has very much been a team effort and it gives us pleasure on behalf of that team to present the Annual Report.

Ehara taku toa i te toa takitahi, engari kē he toa takitini.

My success should not be bestowed onto me alone, it was not individual success but the success of a collective.

Nga mihi nui ki a koutou.

Will Ward, Chair

Kathryn Lawlor, Chief Executive



JOY Pamper Day feedback and participants.

COMMUNITY PROGRAMMES

Our community programmes are designed to *connect and flourish* our local communities creating varied opportunities with the aim of fostering social connection.

We are proud of how our programmes are aligned with the MPHS Pou of **People, Pride, Place** and our values of **Compassion, Contribution** and **Connection**.

This year our programmes included:

- Governance Training and Mentoring
- S.U.N – Shape Up Neighbourhoods
- Kids Club
- JOY – Just Older Youth
- Fit Mama Play Group
- Playball
- Skateboarding
- Game Makers Club
- Various Events and Community Workshops

The following articles are a few of the highlights over the past year.



SKATEBOARDING LESSONS

Rangatahi asked for skateboarding lessons and with the help of Aroha Skate we were able to establish the group this year. The weekly sessions have been a highlight for many with wonderful coaches teaching children valuable lessons in resilience. This is a sport that youth love, and we ensure safety with the right equipment, the space, and guidance to support this activity.

"With our help, students can flourish as skaters within their schools and communities."

"It is such a great program making my son grow his confidence, as well as his physical strength!"

KIDS CLUB

Our friends the Recreators teach our 5- 10 year old children a wide variety of arts and crafts using upcycled materials. Our tamariki had a lot of fun while diverting over 100 kilograms of waste from landfill.

A highlight was Māori language week with celebrations and the tamariki continue to enjoy karakia prior to their kai, activities and korero.

“It’s something for the kids to do after school. They love being creative and keeps their mind going. They have fun. The environment is safe and educational too.”

“Great programme, good quality activities and teach children to upcycle.”



Kids Club end of term Easter celebration with pizza, easter eggs, art and friendship.



Sea Creatures (including cats!) made from papier-mâché enjoying the sunshine.



EASTER PEOPLE PRIDE PLACE EVENT

Our first event after the COVID lockdowns was the Easter People Pride Place event which attracted hundreds of our local community. Kids enjoyed making their own Easter egg baskets, an Easter egg hunt and ice-skating in the carpark.



CELEBRATING MATARIKI

We celebrated Matariki with two successful events Kids Cook Kai and a Matariki Star Journal Workshop. The purpose of the Kids Cook Kai event was about spending time together, the sharing of knowledge and life skills. Our Youth Leaders supported tamariki when they participated in a Chop Suey cooking lesson, enjoyed face painting and a Matariki fairy. The highlight of the night was our tamariki performing waiata for their whānau as they were served dinner by their proud children.

"My daughter and her friend enjoyed the activity and had so much fun. It was a complete package for kids. They loved cooking, dancing, singing, face painting and time with the fairy. Thank you for organising such an amazing event."



Mini Chefs for Matariki 2022

S.U.N - SHAPE UP NEIGHBOURHOOD

Placemaking is about building stronger communities and strengthening the connection between people and the places we share. SUN is a project that supports the community to work together to have a sense of pride in their neighbourhoods and streets. Tidying up and disposing of waste is a barrier for some communities. Our SUN team provides the support and resources needed to assist those who want to tidy up their properties.

This year streets in Sunnyvale, Massey and Glen Eden have benefitted from SUN. Often with members of the same street working together and at times meeting for the first time. At the conclusion, we celebrated with a street event, the coffee van or BBQ. Participants are given information on how to dispose of waste in the future, linking to community recycling options and other community or social supports.



**Home Interaction Programme
for Parents and Youngsters**
Learning to learn together



HAERE RĀ HIPPY

After 12 years and engaging over 600 local whānau over those years we said farewell to HIPPY.

MPHS is grateful to the wonderful coordinators, tutors, parents, caregivers who made this life changing early education programme for whānau with tamariki aged 3 to 5 years possible.

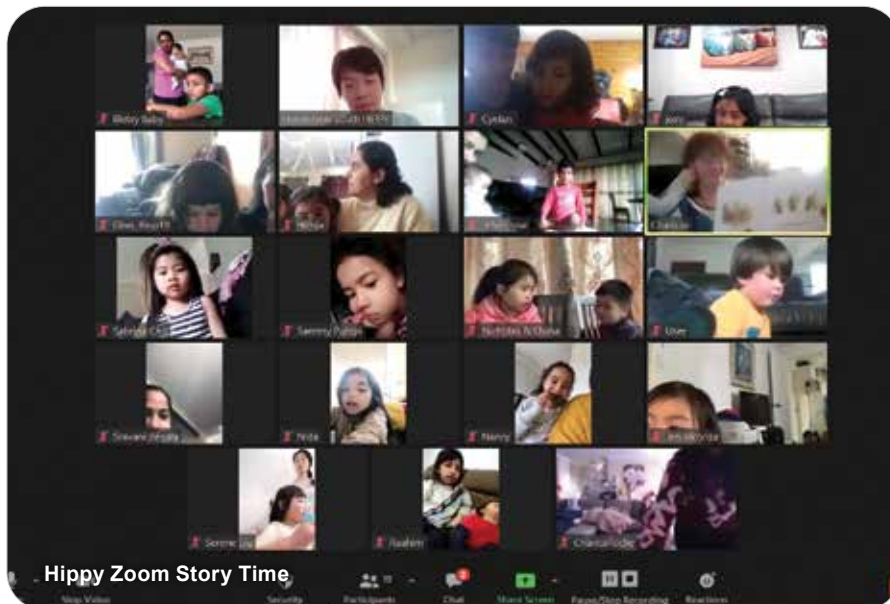
HIPPY strengthens child and parent bonds with children becoming more confident learners and at the same

time empowering parents to achieve higher academic and career goals. This occurs by HIPPY tutors using workbooks and learning resources, activities and role play with families in their homes. HIPPY parents then teach their children school readiness skills that include literacy, numeracy, music and art. Parents also had the opportunity to meet fortnightly to enhance their skills through a variety of workshops and to connect with each other.

The COVID lockdown did not stop families' enthusiasm to continue

their HIPPY journey through zoom and phone calls to enjoy role plays, stories and activities. These vital connections over the past year and through COVID were more important than ever.

When able to return to in person group meetings our tamariki led art and music events commenced again. A highlight was the HIPPY band performing at the MPHS Matariki Kids Cook Kai event.



Graphic design by Hippy mum Kitty



Hippy band at Matariki Kids Cook Kai



SUCCESS STORY – HIPPIY GRADUATES SRAVANI & HARSHITHA

With english being Sravani's second language, initially reading the workbooks was a challenge, however, she was incredibly determined and with the support of her tutors Sravani became more confident with her English and roleplay.

“Participating in HIPPIY taught me many skills about educating Harshitha, preparing her for school, and supporting her learning and development, as well as receiving parenting tips. Harshitha loves to learn, especially by reading story books and counting.”

 Sravani

YOUTH SERVICES

BREAKAWAY

The MPHS holiday programme continues to be one of the most popular amongst rangatahi. The focus was to run a programme where youth can connect, learn and have fun. Mostly the feedback is that youth love to get active together, make new friends and grow stronger bonds with old friends and the youth leaders. Many get to explore new areas around Auckland and try new activities as the programme is always action packed and aimed at the interests of 11 to 18 year olds.

We know the success of the programme this year was due to it being led by local youth leaders, all of who were participants on the programme when they were younger and have grown into young leaders on the programme. They know how to connect with the youth, how to make it interesting, fun and inclusive. They also know first hand some of the challenges youth are experiencing and there is a lot of peer support, care and aroha built into the programme.

This year we sought feedback from whānau into the value of the programme and were overwhelmed with what the programme means to

whānau and our wider community. The myriad of impacts from COVID on our whānau and aiga are still very much being felt across the community and the holiday programme provides a level of respite for parents who are worried about what their children will be doing during the holidays, also providing rich experiences for children and keeping them safe.

With the increase in young people engaging in undesirable social activities becoming more apparent and the increasing financial pressure for many families we know this programme is needed and valued by the community more than ever. The holiday programme represents our community with over 60% of the youth participants being Māori and Pasifika rangatahi who are active in the co-design of the programme ensuring it is relevant and inclusive for them.

We are delighted and appreciate the ongoing support from Oranga Tamariki to make this vital programme possible as it provides so many in our community with skills, hope, connection and an opportunity to flourish.



Clarence (Youth Manager) receiving a gift basket for the youth leaders with note: "Thank you amazing Breakaway and Hubwest team for your amazing tautau and alofa."

YOUTH STUDIO

Youth Studio is a creative space for young people to explore their creativity through learning animation, graphic design, music, film and fine arts. They also get support to work on school projects or develop their own creative interests.

The studio has been running for 12 years and our members have grown together as a group, resulting in many collaborative projects with successful outcomes. Some of these projects include short animations, game designs and activities that were all designed and initiated by the youth themselves.

During the COVID lockdowns many youth studio members stayed connected virtually, supporting each other and sharing activities they could get involved with at home.

They engaged in online physical games and training sessions, taking Youth Studio onto Zoom. As a group they discussed vaccination and decided to produce their own animations and gifts to share and support the vaccination drive.

Our older members of the youth studio all take on leadership roles, supporting younger members, helping to run community events. Their contribution has a ripple effect with other rangitahi witnessing their role modelling.

Once a week we welcomed students from Bruce McLaren Intermediate to share our studio resources and teach animation and robotics continuing a strong partnership with our neighbouring school.

Youth studio members actively engage in community events and they enjoy working as a team to make a difference in the community and grow their leadership skills.



A GLANCE AT OUR WORK IN 2021 - 2022

COMMUNITY CONNECTIONS

3405 participants at community events

205 participants at Governance events

409 Kids Club participants

235 Play Group participants

122 JOY Club participants

99 Youth Club participants

9 community events



SHAPE UP NEIGHBORHOODS

9 activation of spaces and/or street clean up events



HIPPY

HENDERSON SOUTH & HIPPY RANUI

103 families engaged with

HUBWEST

COMMUNITY FACILITIES

2631 hours booked

21,890 participants

574 bookings

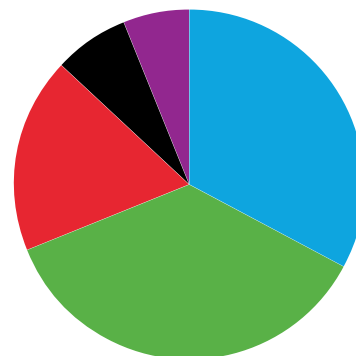
YOUTH STUDIO

594 members

BREAKAWAY HOLIDAY PROGRAMME

154 participants

BREAKAWAY HOLIDAY PROGRAMME ETHNICITY



● Pacific 33% ● Asian 7%,
● Māori 36% ● MELAA 6%
● NZ/European 18%



572 volunteers

120 trees planted

100 kgs of rubbish collected

4 community public events



TIPPING POINT RECYCLE SHOP

Around **334.5** tonnes
diverted from landfill

THANK YOU TO OUR SUPPORTERS



Helping children,
young people & families
towards brighter futures
greatpotentials.org.nz

Thank you to our volunteer Governance Board:
**Will Ward – Chairperson, Mark Chelton – Deputy
Chairperson, Natasha McDowall – Treasurer, Kimberly
Rees, Deborah Raroa, Esther Goh and Lionel Anderson.**

HUBWEST

Hubwest was officially opened in August 2012 so this year the venue turned 10. Hubwest continues to be a thriving and vibrant space that is activated 7 days a week and more popular than ever.

We are fortunate to have a wonderful facility that the community takes real pride in. We run the MPHS programmes and events from the hub, hire the venue to community members and organisations for a range of activities and partner with other organisations to run activities that align with our purpose of 'enabling communities to connect and flourish'. Wonderful examples of this are Zumba run by The Fono, community dinners hosted by the Life Church team, mental health and disability peer support and a range of health screening initiatives.

"Hubwest is our go to venue to whānau celebrations and hui."

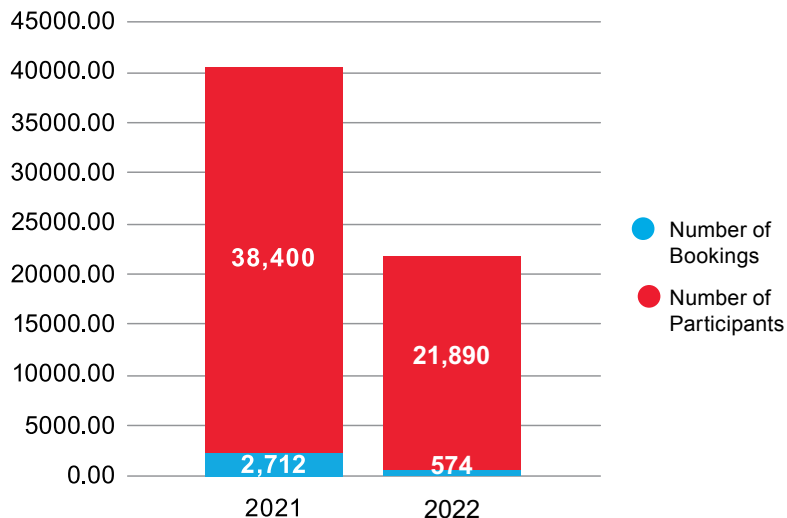
"So blessed to have Hubwest in our community the place and the amazing people."

"Such an amazing hub, a place to get involved."

"Thanks for being a safe and engaging place for my tamariki."



HUBWEST BOOKINGS



PRIDE IN OUR PEOPLE

PROFILE SERIES
No.1

DEBORAH RAROA

MPHS KAITAKAWAENGA

Ka titiro whakarunga ki Hikurangi Maunga, he maunga tū tonu, e kore e neke, ko ia tēra e korowai ana i tōku whare o Ruataupare, ka rongorongo nei i nga wai o Waiapu Awa, Ko Porourangi tēra e kaihautu ana, i te waka o Nukutaememeha ki runga i nga wai tai pākato. Ko Au ko Hikurangi, ko Hikurangi ko au. Ko Ngati Porou te Iwi. Tihei mauri ora!

Family and self-care are two very important areas for Deborah as well as awareness, gratitude, good character and having an abundant mindset which all play a prominent role in her life.

How whānau engage with each other, how they look out for each other and how they are there for each other are everything to her and so too is the importance of her own self-care with a regular practice of yoga and meditation.

Awareness for Deborah is the ability to see the invisible – observing what the ordinary eye might not. Being grateful and having an abundant mindset also play an important part in Deborah's life because seeing the glass half full rather than half empty is a character trait she is proud of.

Deborah was inspired in her Board role from being a part of the MPHS vision of supporting community whānau and tamariki and working on getting more funding to support

this endeavour is a driver for her. More recently taking on the role of Kaitakawaenga building Māori responsiveness capability within MPHS in a graceful way. She looks at how MPHS can strengthen the knowledge of Mātauranga Māori through policy and ascertaining community needs to help serve it better.

“I feel confident in this role because I've sat at a lot of tables and worked in the community for so long I'm able to see where organisations need to be strengthened for better Māori outcomes”. As an example a goal for MPHS is to strengthen Mātauranga Māori.

The stand out for the past year was maintaining Oranga Tamariki funding for the Rangatahi Holiday Programme after being advised it was going to end. A significant number of the rangatahi and whānau engaged in the programme are Maori. The youth leaders run



the programme with a Te Whare tapa Whā lens that benefits all rangatahi. The MPHS team, Board and Community pushed back and refused to accept that the funding was being removed based on the community need for the holiday programme. She is proud that they refused to take no for an answer and won!

ALWAYS TIPPED IN THE RIGHT DIRECTION

The last year has been a challenging one. As a social enterprise that centres around rescuing items from landfill and our retail space being open COVID restrictions and closures made their mark. But full credit has to be given to the staff and volunteers at Tipping Point for their resilience and ability to adapt under what was at times, trying circumstances. The lifting of mandates and the return to normality has been welcomed by our staff, friends and customers and hopefully we are seeing the disruption of the last few years receding into memory.

As one set of challenges finishes, new ones it seems appear. The cost

of living crisis has impacted our whānau in the West and we have been doing our utmost to keep our pricing constant in the face of this. Our work in reducing the amount of waste being taken to landfill continues unabated and we are looking forward to Auckland Council developments on site that will increase our capacity to divert and engage the community more in zero waste and recycling initiatives

Plans are advanced for a whole site redevelopment at 50 The Concourse. The Council is committed to shifting the Waitakere Refuse Transfer Station (WRTS) to the Waitakere Resource Recovery Park (WRRP). In these



**50 The Concourse
Henderson, Auckland**

[TippingPoint.org.nz](https://www.tippingpoint.org.nz)

[f](#) MPHSTippingPoint

plans, recycling and reuse will be prioritised and Tipping Point will play a leading role with a new purpose-built facility. Key to this change will be ease of access for those dropping off goods and materials and those who just want to shop, away from the heavy machinery. The current plans



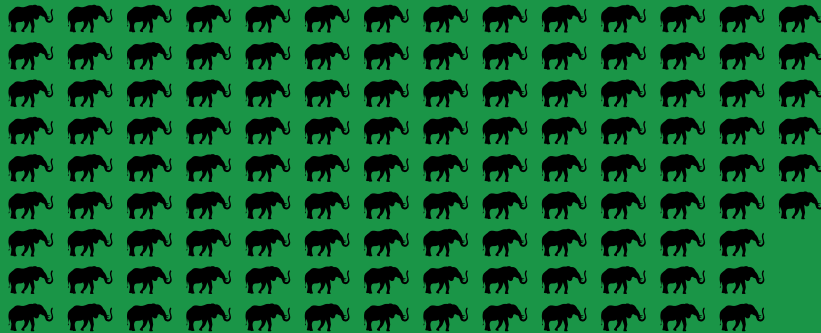
also include spaces for other community activities that make use of recovered resources (upcycling/remaking). Current development is scheduled to start early in 2023, so keep an eye out for activity.

We continue to be proud of what has been achieved at Tipping Point this year through the hard work and dedication of a small team and the support of our Auckland Council partners at WRTS. Our key outcomes have been rescuing waste from landfill, offering local employment and volunteer opportunities, often to those with barriers to employment, and using profits to fund community youth projects.



TONNAGE RESCUED FROM LANDFILL FROM 1 JULY 2021 – 30 JUNE 2022 BY TIPPING POINT COMMUNITY RECYCLING CENTRE

334.5 TONNES WHICH IS OVER 123 ELEPHANTS*



* Based on the average Asian Elephant weighing 2.7 tonnes.

TIPPING POINT – AN AUCKLAND ATTRACTION!

Google reviews for Waitākere Refuse and Recycling Centre 'Tipping Point' totalled 254 in October, giving it a 4.1 rating! This is what Gabi Lardies reported in a Spinoff publication on the 11th of October highlighting the rating making Tipping Point a comparable Auckland attraction to places such as Sky Tower (4.5), the Auckland Art Gallery (4.5), Rangitoto (4.6) and Kelly Tarltons (4.3).

WAIŌREA COMMUNITY RECYCLING CENTRE - ZERO WASTE HUB

This year we started an exciting new journey, partnering with Auckland Council to develop and operate a flagship community resource recovery and education hub known as the Waiōrea Community Recycling Centre located in Western Springs.

Our project team which was formed in July 2022 has been working on all things related to developing the site. Once the building is fit for purpose the shop and education

hub will open creating an exciting new zero waste hub locally.

We've been thrilled with the response and see such passion at community hui as we move together towards getting the recycling centre ready for Tāmaki Makaurau – discussing future collaboration opportunities for this kaupapa.

"Weaving collective strengths to create positive change".



PRIDE IN OUR PEOPLE

PROFILE SERIES
No.3

West Auckland is home to Darryl and it's where he grew up. His past career included the corporate world in sales, however when talking about his role as the Manager at Tipping Point he says there are no downsides to this job, everyone wins.

The top of Darryl's important list are relationships and connections, essentially people – whānau and friends. He believes that honesty and trust is what glues relationships and connections together.

The Tipping Point Manager role found him when he was made redundant from the corporate role, his previous corporate sales skills were easily transferable to his role as well as the people management side of things. The “no downsides to this role” he mentions are about zero waste, taking away from waste streams, offering local employment, offering products to customers, generating surplus for MPHS and our rangatahi programmes and collaborating with other partners to help people in need. Connecting with other CRC's (Community Recycling Centres) is a highlight,

DARRYL JELLYMAN

TIPPING POINT MANAGER

being able to share valuable resources to help their centres, free of charge. What's there not to love!

The highlight over the last year was making it through COVID. The biggest challenge was keeping staff morale up over that time and managing the mandates. The staff were so happy to be back to work and open for business and they are looking forward to a new facility where the store will be three times the size of the existing shop, so we can grow and achieve more, there's a lot to look forward to.



PROJECT TWIN STREAMS

The project twin streams team are proud to maintain 20 hectares of West Auckland's native green asset including Oratia, Opanuku and lower Waikumete streams. We are passionate about activating community groups and individuals to partner with us in this environmental restoration empowering communities to act as environmental stewards and exercise kaitiakitanga.

Engaging local tamariki in the natural environment that surrounds

us is a key part of project twin streams and Waitakere SDA school explored and learned waterways and the importance of healthy streams. They showed particular interest in the abundance and diversity of the fish, invertebrates and insects that live along our local streams. Part of the education is how all of us can enhance our local environment through preventing littering, recycling, pest control and planting native trees.



To find out more about Project Twin Streams visit:

projecttwinstreams.com

[f projecttwinstreams](https://www.facebook.com/projecttwinstreams)



SDA students in environmental education



Having worked for MPHS nearly 10 years Esteban is responsible for planning, organising, and monitoring the activities of Project Twin Streams in the Henderson - Sunnyvale area to restore over 20 hectares of significant ecological areas. He enjoys working alongside Semisi and a group of 20 volunteers who regularly contribute their time. Esteban reflected on what a fantastic team they are and how much wonderful work they get done together.

ESTEBAN HEVIA

MANAGER PROJECT TWIN STREAMS

Being involved in a local community organisation that holds the Kaitiakitanga over such wonderful Taonga in his own backyard is what drives Esteban to work at MPHS.

Esteban's family is the most important thing in his life and what drives him is his purpose of being a good father and husband as well as having a fulfilling career. For him to achieve his purpose his overall wellness is paramount which he emphasises are his and his families mental and physical wellbeing. His values include kindness, growth, balance, and freedom and these are woven throughout his home, career and community life – being

able to contribute, grow and live the life he wants.

He believes it is important to treat people and the environment the same way you would like to be treated.

His main connection to MPHS is related to where he and his family are delighted to call home and love. He is a proud West Aucklander who is passionate about native bush restoration and is deeply committed to using his expertise to contribute to the community for the better and leave a legacy in doing so.

A highlight from the past year was being able to perform the restoration work again and re-engage with the volunteers after the COVID issues we all endured.



Project Twin Streams Awa



2022 FINANCIAL OVERVIEW

WHAT CAME IN?

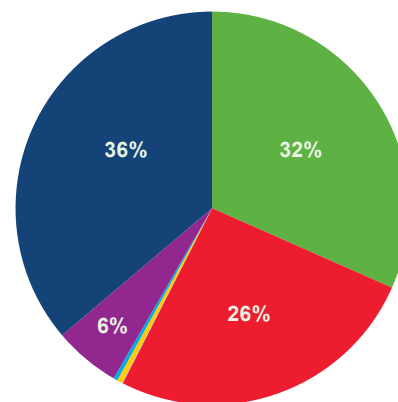
Due to the interruption of services during COVID lockdown and restrictions, revenue decreased by 12% compared with the previous year, fortunately for the MSD Wages Subsidy, a reduction of salary at Tipping Point, and a reduced six-day week for the first few months after lockdown enabled us to reduce the impact on the organisation ending with a profit of \$43,300.

- Revenue from Contracts decreased by 13%, this was due mainly to the end of the HIPPY- contract ending in December 2021, with a short-term extension to the end of the financial year resulting in reduced funding of 33%.
- Revenue from grants remained stable with a slight decrease of 2%.
- Tipping Point income decreased by 16%, due to the lockdown closure.
- The use of Hubwest decreased by 67% during lockdown which resulted in an 11% reduction in revenue.

Despite a challenging year with COVID interruptions, the financial position is showing positive signs of a healthy Trust with sound equity and reserves remaining untouched.

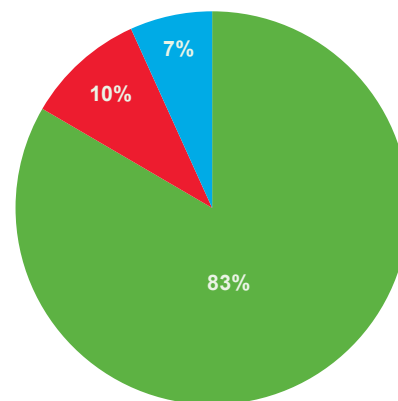
WHERE THE MONEY CAME FROM

- Contracts
- Grants
- Donation & Fundraising
- Interest
- Management Services
- Rental Revenue
- Sales Income



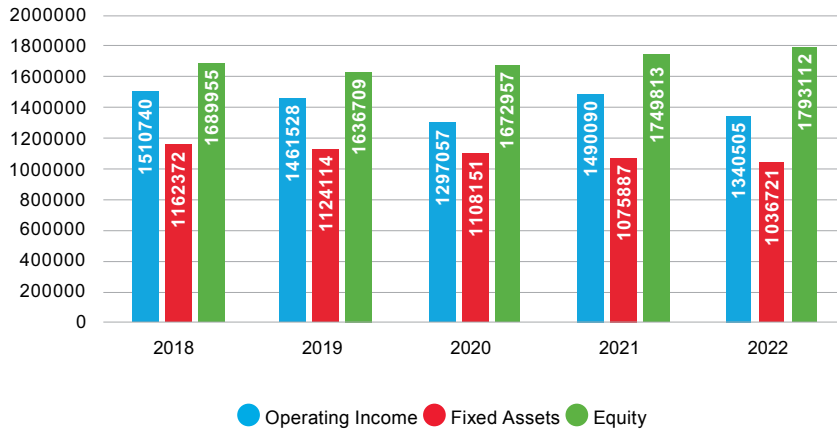
WHERE THE MONEY WAS SPENT

- Employees & Volunteers Related Cost
- Operational Cost
- Administration & Other Expenses



A copy of the audited financial statements is available from the Charities commission website www.register.charities.govt.nz. Search for MPHS using the number CC46419.

FINANCIAL OVERVIEW



WHAT NEXT?

For the 2022/2023 financial year, we look forward to the following:

- Developing and continue growth of Social Enterprises including the Waiorea CRC.
- Developing partnerships with funders, working as a sustainable community organisation.



Councillor Linda Cooper and volunteers

Kimberley refers to the MPHS hub as a unique place that has evolved from an important history. She was part of the initiation of the hub around 15 years ago and she believes that the early work driven by the vision, commitment, and tenacity of community kaumatua and others was not only inspiring, but also a driver for her to stay involved, and set a solid foundation for MPHS, which she refers to as 'unique' in comparison to other community centres.

She values the collective approach to life and working with others to achieve outcomes together and she places great importance on being involved in things greater than herself. She said, "I like generosity, being open and inclusive and working together in a generous way."

Originally from Boston, on the east coast of the USA, she and her husband left on a sailboat for their 'around the world' adventure through the Caribbean across the Pacific and arrived in New Zealand in 1994. They instantly fell in love with Aotearoa so didn't make their

KIMBERLEY REES

LONG STANDING BOARD MEMBER

original destination of Australia and settled here having their daughter who became a competitive sailor for a time.

The history she highlighted was that MPHS started with a different name, different location, and focus. The focus was on youth and ran from the Bruce McLaren School using what she called their 'broom closet' as an office. It blossomed because of the really committed people wanting their own space driven by their concern about the youth in the area needing a place to go after school, to socialise and to access and upskill on computers, at a time when they were expensive to own. She asserts that if you want something for your community, put the hard yards in and you can make it happen, just like the founders of MPHS did.

Because the centre has been running for over 15 years, intergenerational participation is occurring. Adults who accessed the centre in their early years have returned and mentor other tamariki, giving back to their community. The packed-out weekly Zumba class draws people from all ages and abilities with whānau joining together in one place - dancing together, creating social connection

and local community involvement. She said "nowhere else do you see that in Auckland".

The programmes evolve because of the people – the MPHS staff support community ideas of what is important to them, and then they try things out, the whole dynamic is community driven and evolutionary.

She was impressed how MPHS and the community handled life throughout COVID both during lockdowns and afterward. Creatively connecting with the community without using the hub facility and maintaining connection so people didn't feel lonely, and when it was safe to return, the hub was utilised and again flourishing.



He Karakia Whakakapi

Kia whakairia te tapu
Kia wātea ai te ara
Kia turuki whakataha ai
Kia turuki whakataha ai
Haumi e. Hui e. Tāiki e!

Restrictions are moved aside
So the pathways is clear
To return to everyday activities



MPHS COMMUNITY TRUST

HubWest 27 Corban Ave, Henderson South, Auckland 0612
(Corner of Bruce McLaren Rd & Corban Ave)

09 838 4820 | info@mphs.org.nz | [f](https://www.facebook.com/mphscommunity) mphscommunity

www.mphscommunity.org

people • pride • place